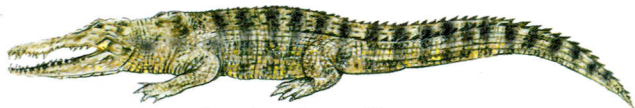


REPTILES & AMPHIBIANS



American Crocodile

Crocodylus acutus To 15 ft. (4.5 m)
Saltwater species has a narrow snout.
Most teeth are visible when its jaws are closed.



American Alligator

Alligator mississippiensis
To 20 ft. (6 m)
Freshwater species has a broad snout. Florida's state reptile.



Striped Mud Turtle

Kinosternon baurii
To 5 in. (13 cm)
Has three stripes on shell.



Florida Softshell

Trionyx ferox To 13 in. (33 cm)
Has a tubular snout.



Peninsular Cooter

Chrysemys floridana peninsularis
To 16 in. (40 cm)
Neck marks form 'hairpin' shapes.



Box Turtle

Terrapene spp. To 8 in. (20 cm)
Note high-domed shell.



Florida Red-bellied Turtle

Chrysemys nelsoni To 13 in. (33 cm)



Mediterranean Gecko

Hemidactylus turcicus To 5 in. (13 cm)
Note unwebbed feet. Lacks eyelids.



Green Anole

Anolis carolinensis To 8 in. (20 cm)
Green lizard has a wedge-shaped snout.



Cottonmouth

Agkistrodon piscivorus
To 6 ft. (1.8 m)

Venomous water snake has a spade-shaped head. When threatened it often gapes and exposes the white (cotton) insides of its mouth.

REPTILES & AMPHIBIANS



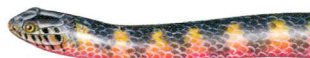
Southern Black Racer

Coluber constrictor priapis
To 6 ft. (1.8 m)
Dark snake has a white chin.



Rough Green Snake

Ophedrys aestivus To 4 ft. (1.2 m)



Mud Snake

Farancia abacura To 6.5 ft. (2 m)
Shiny dark snake has reddish belly bands extending up its sides.



Eastern Diamondback Rattlesnake

Crotalus adamanteus To 8 ft. (2.4 m)



Eastern Ribbon Snake

Thamnophis sauritus To 40 in. (1 m)
Slender snake has three distinct stripes.



Eastern Garter Snake

Thamnophis sirtalis sirtalis To 4 ft. (1.2 m)
Green to black snake with light back and side stripes.



Southern Leopard Frog

Rana utricularia
To 5 in. (13 cm)
Green to brown frog is covered with dark spots.



Green Treefrog

Hyla cinerea
To 2.5 in. (6 cm)
Call is a cowbell-like clank.



Squirrel Treefrog

Hyla squirella
To 1.5 in. (3.5 cm)
Call during rains is a squirrel-like chattering.



Little Grass Frog

Limnaea ocularis
To .6 in. (3 cm)
High-pitched call is a glass-like tinkling.



Pig Frog

Rana grylio
To 6 in. (15 cm)
Call is a pig-like grunt.



Florida Cricket Frog

Acris gryllus To 1 in. (3 cm)
Call is a series of shrill chirps that sound like marbles clacking.



Indigo Snake

Drymarchon corais To 8.6 ft. (2.6 m)
Large dark snake has a red to cream chin and throat.



Corn Snake

Elaphe guttata To 6 ft. (1.8 m)
Note black-bordered red blotches.



Ringneck Snake

Diadophis punctatus
To 30 in. (75 cm)
Small snake has a neck ring. Belly scales are vivid yellow, orange or red.



Eastern Coral Snake

Micruis fulvius To 4 ft. (1.2 m)
Very poisonous banded snake has a black snout.



Yellow Rat Snake

Elaphe obsoleta quadrivittata
To 8.2 ft. (2.5 m)