

# REPTILES & AMPHIBIANS



**Chorus Frog**  
*Pseudacris triseriata*  
 To 1.5 in. (4 cm)  
 Note dark stripes on back. Call sounds like running a thumbnail over the teeth of a comb.



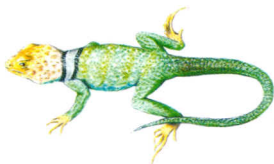
**Boreal Toad**  
*Bufo boreas* To 4 in. (10 cm)  
 Males have a soft, clucking call.



**Western Box Turtle**  
*Terrapene ornata* To 6 in. (15 cm)



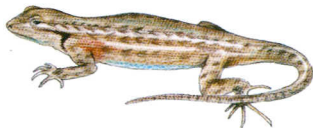
**Tiger Salamander**  
*Ambystoma tigrinum*  
 To 14 in. (35 cm)  
 Pattern of yellowish and dark blotches is variable.



**Collared Lizard**  
*Crotaphytus collaris* To 14 in. (36 cm)  
 Note two dark collar markings.



**Side-blotched Lizard**  
*Uta stansburiana* To 7 in. (18 cm)  
 Note dark blotches behind forelegs.



**Sagebrush Lizard**  
*Sceloporus graciosus* To 6 in. (15 cm)  
 Note red-orange spot behind foreleg and blue belly.



**Eastern Fence Lizard**  
*Sceloporus undulatus* To 7 in. (18 cm)  
 Has dark zigzag bars down back.



**Western Terrestrial Garter Snake**  
*Thamnophis elegans* To 40 in. (1 m)  
 Has a defined back stripe and dark side spots.



**Western Rattlesnake**  
*Crotalus viridis* To 5 ft. (1.5 m)  
 Has dark blotches on back and a spade-shaped head.



**Bullsneke**  
*Pituophis melanoleucus* To 8 ft. (2.4 m)  
 Thick-bodied, light-colored snake is covered with brown blotches.



**Milk Snake**  
*Lampropeltis triangulum* To 6.5 ft. (2 m)  
 Slender snake ranges from Canada to Ecuador.