

## AMPHIBIANS



**Naked Tree-frog**  
*Litoria rubella*  
To 4 cm (1.6 in.)  
Call is a pulsing note that rises near the end.



**Green Tree-frog**  
*Litoria caerulea*  
To 10 cm (4 in.)  
Note toe pads.  
Call is a repeated –  
crawk-crawk.



**Northern Banjo Frog**  
*Limnodynastes terraereginae*  
To 8 cm (3 in.)  
Call sounds like a banjo being plucked – plonk-plonk-plonk.



**Striped Rocket Frog**  
*Litoria nasuta*  
To 5 cm (2 in.)  
Note long snout.  
Call is a repeated –  
wick-wick-wick.



**Cane Toad**  
*Bufo marinus*  
To 25 cm (10 in.)  
Large introduced toad  
has large glands behind its  
head and horizontal pupils.

## REPTILES



**Eastern Snake-necked Turtle**  
*Chelodina longicollis* To 25 cm (10 in.)



**Loggerhead Sea Turtle**  
*Caretta caretta* To 2.1 m (7 ft.)  
One of 6 marine turtles  
that occur in Australia.



**Estuarine Crocodile**  
*Crocodylus porosus* To 5 m (16.5 ft.)  
Found in northern coastal rivers and  
swamps. The similar freshwater crocodile  
is much smaller and inhabits both inland  
and coastal waters in the north.



**Burton's Legless Lizard**  
*Lialis burtonis* To 60 cm (24 in.)  
Head is wedge-shaped. Colour varies.



**Sand Monitor**  
*Varanus gouldii* To 1.6 m (5.3 ft.)  
Colour varies from yellow to  
black. Note eye stripe.

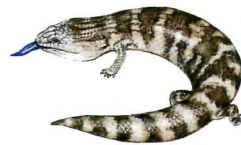


**Bynoe's Gecko**  
*Heteronotia binoei* To 8 cm (3 in.)  
Likely the most abundant of the more  
than 100 species of Australian gecko.  
Colour is highly variable.



**Frilled Lizard**  
*Chlamydosaurus kingii*  
To 90 cm (3 ft.)  
Frill is erected as a defensive  
mechanism. Australia's national reptile.

## REPTILES



**Common Bluetongue**  
*Tiliqua scincoides* To 55 cm (22 in.)  
Sticks out blue tongue when threatened.  
The similar shingleback lizard  
has rough pinecone-like scales.



**Thorny Devil**  
*Moloch horridus* To 20 cm (8 in.)  
Spiny lizard has a small head. Occurs  
throughout western Australia.



**Black-headed Python**  
*Aspidites melanocephalus*  
To 2.5 m (8.2 ft.)  
Common in northern areas.



**Green Tree-snake**  
*Dendrelaphis punctulata*  
To 2 m (6.5 ft.)  
Body colour may be  
green, blue or yellow.



**Carpet Python**  
*Morelia spilota variegata*  
To 4 m (13 ft.)  
Colour varies from brownish  
to black-and-yellow.

## VENOMOUS SNAKES

Australia is home to 20 of the 23 most poisonous snakes in the world. To avoid contact with snakes: 1) Make noise when walking; 2) Watch where you step; many snakes are well-camouflaged and can be sluggish in the morning or after eating; and 3) Don't put your hands in places you can't see into. Turn over rocks and logs with a stick or tool.



**Eastern Tiger Snake**  
*Notechis scutatus*  
To 2 m (6.5 ft.)



**Red-bellied Black Snake**  
*Pseudechis porphyriacus*  
To 2.5 m (8.2 ft.)  
Usually found near water.



**Southern Death Adder**  
*Acanthophis antarcticus*  
To 1.2 m (4 ft.)  
Fat-bodied snake has a triangular head.  
Colour varies from grey to reddish.



**Western Brown Snake**  
*Pseudonaja nuchalis*  
To 1.5 m (5 ft.)  
Colour varies from light  
tan to dark brown.

AUSTRALIE